

65 RESIDENTIAL LOTS (VTTM 20368) | VICTORVILLE CA



(310) 866.7979
antonio@saxonandcompany.com

SAXON & CO
REAL ESTATE BROKERAGE & INVESTMENTS

PROPERTY HIGHLIGHTS

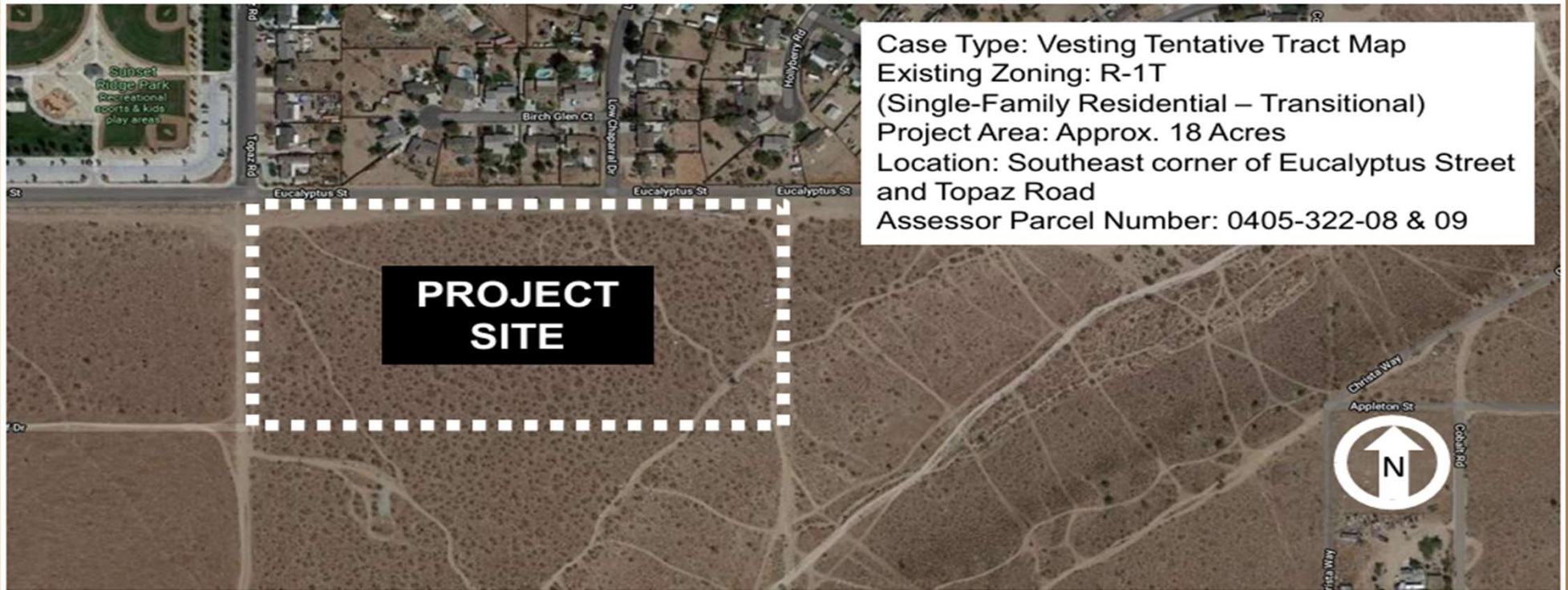
- 65 Approved (VTM 20368) Residential (7000sf Min) Lots.
- Includes +/-250K Engineering, Studies, Plans , Permits & Approvals.
- All Utilities Adjacent to the Property Boundary.
- Located in City of Victorville Highly Desirable Golden Triangle Area.
- Next to New Home Building- LCI, Legacy & KB Homes, DR Horton, Lennar, Richmond American, K Hovnanian & Others.
- Historically Low New & Resale Home Supply in the Victorvalley Market.
- Central Major Employment Center, Logistics & Transportation Hub:
 - Los Angeles, Las Vegas, Riverside, San Bernardino & San Diego

(310) 866.7979
antonio@saxonandcompany.com

SAXON&CO
REAL ESTATE BROKERAGE & INVESTMENTS

65 RESIDENTIAL LOTS (VTTM 20368) | VICTORVILLE CA

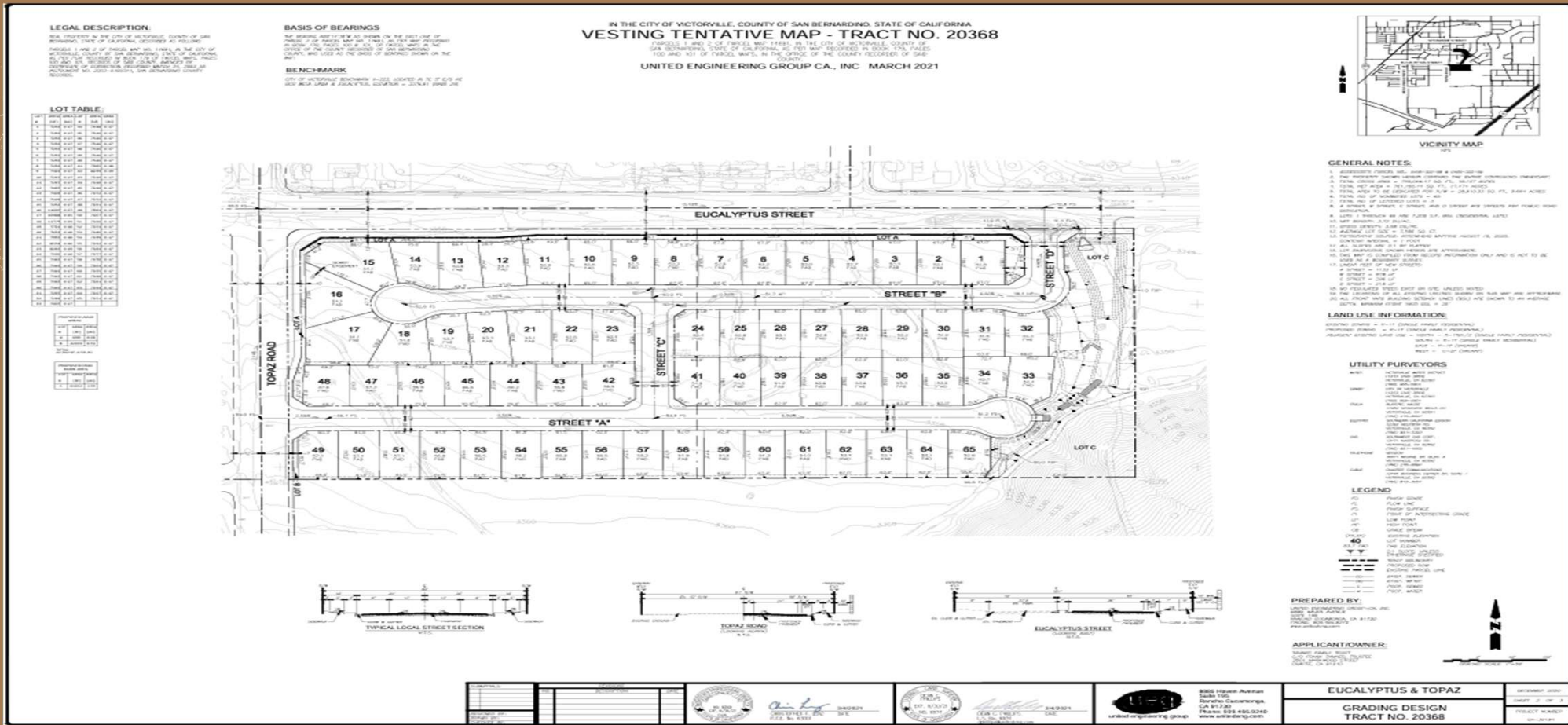
CASE: PLAN21-00011



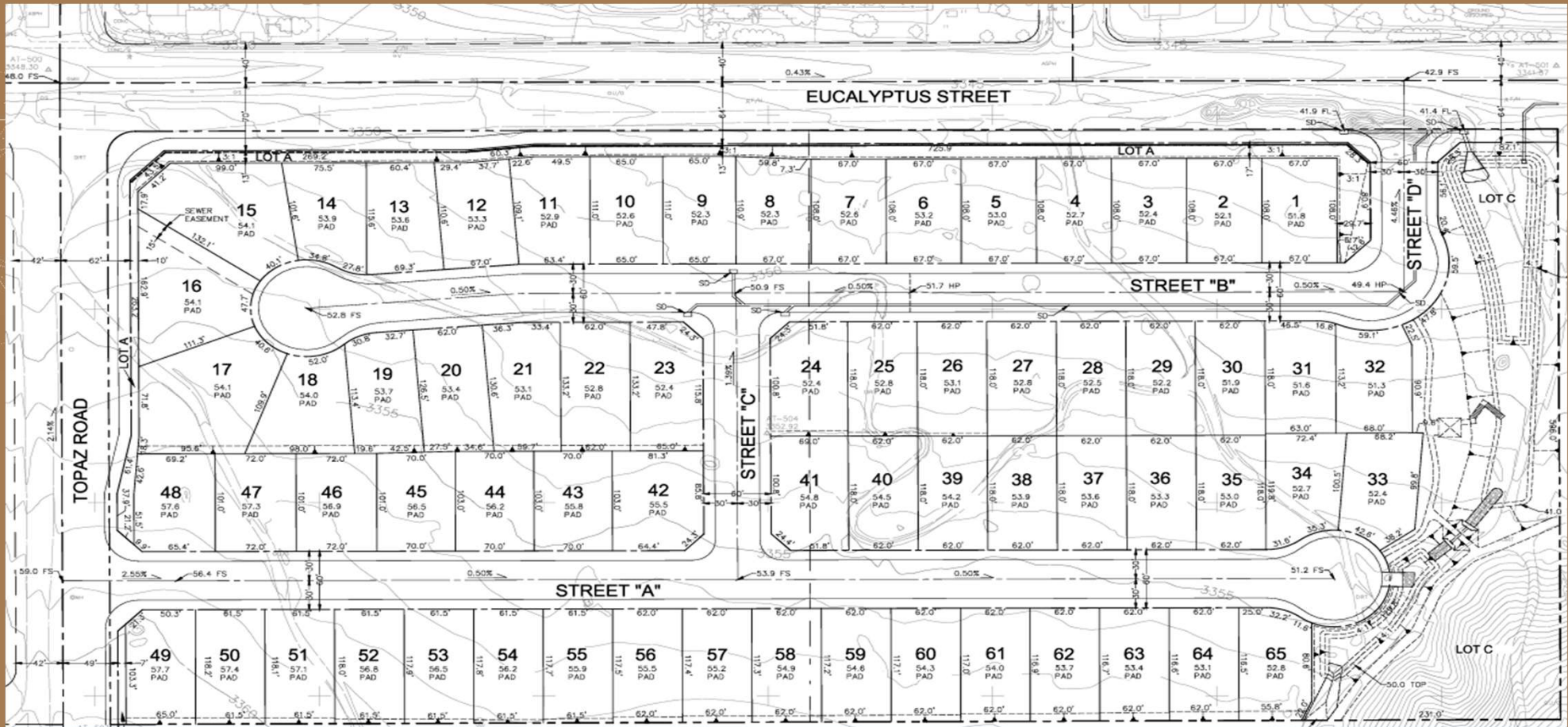
(310) 866.7979
antonio@saxonandcompany.com

SAXON&CO
REAL ESTATE BROKERAGE & INVESTMENTS

65 RESIDENTIAL LOTS (VTTM 20368) | VICTORVILLE CA



65 RESIDENTIAL LOTS (VTTM 20368) | VICTORVILLE CA



(310) 866.7979
antonio@saxonandcompany.com

SAXON&CO
REAL ESTATE BROKERAGE & INVESTMENTS

65 RESIDENTIAL LOTS (VTTM 20368) | VICTORVILLE CA

BRIGHTLINE WEST- HIGH SPEED RAIL



Location Map



Route of proposed HDC High Speed Rail line in context with Brightline West and California High Speed Rail

High Desert Corridor Joint Powers Agency

(310) 866.7979
antonio@saxonandcompany.com

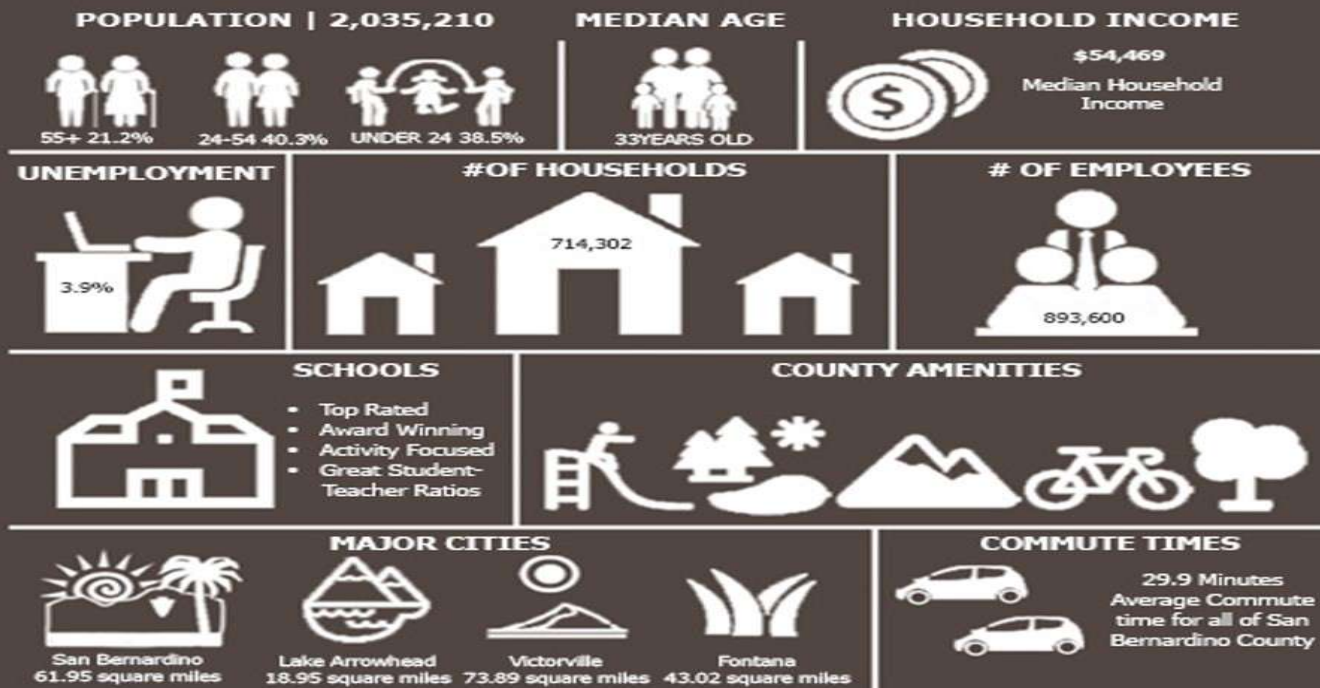
SAXON&CO
REAL ESTATE BROKERAGE & INVESTMENTS

65 RESIDENTIAL LOTS (VTTM 20368) | VICTORVILLE CA

III COMMUNITY OVERVIEW

DEMOGRAPHICS

DEMOGRAPHICS | SAN BERNARDINO COUNTY



MISSION STATEMENT

The mission of County of San Bernardino is to satisfy its residents by providing service that promotes the health, safety, well being, and quality of life of its residents according to the County Charter, general laws, and the will of the people it serves.

(310) 866.7979
antonio@saxonandcompany.com

SAXON&CO
REAL ESTATE BROKERAGE & INVESTMENTS

DEMOGRAPHICS SUMMARY

SAN BERNARDINO COUNTY PROFILE

POPULATION:	2,196,314
HOUSEHOLDS:	645,058
UNEMPLOYMENT RATE:	7.2 %
EMPLOYED WORKFORCE:	954,000
TOP EMPLOYERS:	County of San Bernardino, Stater Bros., San Bernardino County Superintendent of Schools, Loma Linda University Health, Top Flight Assistance, IEHP-Inland Empire Health Plan, Citizens Business Bank, Fedex Ground, Loma Linda University Med Ctr, Ontario International Airport, San Bernardino County Sheriff
HOMEOWNERSHIP RATE:	61.1%
MEDIAN HOME PRICE:	\$535,000
MEDIAN HOUSEHOLD INCOME:	\$77,423

CITY OF VICTORVILLE PROFILE

POPULATION:	140,279
HOUSEHOLDS:	36,647
UNEMPLOYMENT RATE:	10.3 %
EMPLOYED WORKFORCE:	42,400
TOP EMPLOYERS:	Southern California Logistics Airport, Victor Valley College, Desert Valley Hospital, Verizon, Victor Valley Union High School District, Victor Elementary School District, Federal Correctional Complex, Walmart, Victor Valley Community Hospital
HOMEOWNERSHIP RATE:	59.7%
MEDIAN HOME PRICE:	\$460,000
MEDIAN HOUSEHOLD INCOME:	\$65,746

(310) 866.7979
antonio@saxonandcompany.com

SAXON&CO
REAL ESTATE BROKERAGE & INVESTMENTS

